

Understanding the Registry

Uploading Residence from Desktop/Laptop Computers

The information below shows you how to upload a document from your laptop or desktop computer to the Medical Marijuana Use Registry.

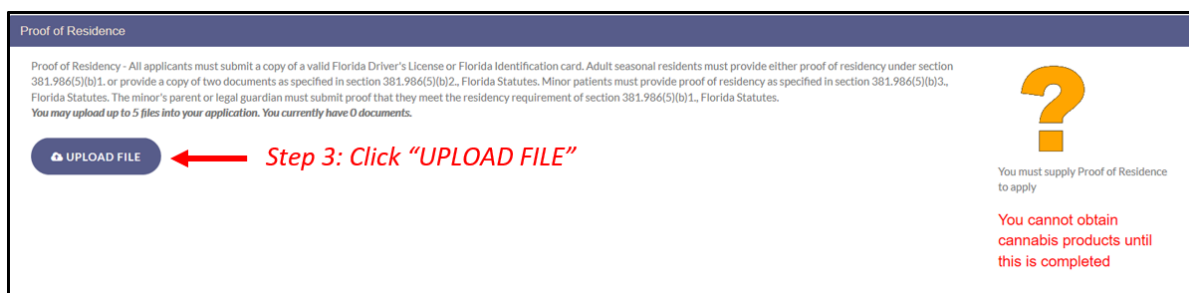
*For information on uploading documents from your smartphone or tablet, [click here](#).

Step 1: Log into the Medical Marijuana Use Registry at <https://mmuregistry.flhealth.gov/>.

Step 2: Navigate to the “Your Card” menu option at the top of the page to view your identification card application.



Step 3: Click “Upload File” in the Proof of Residence section.

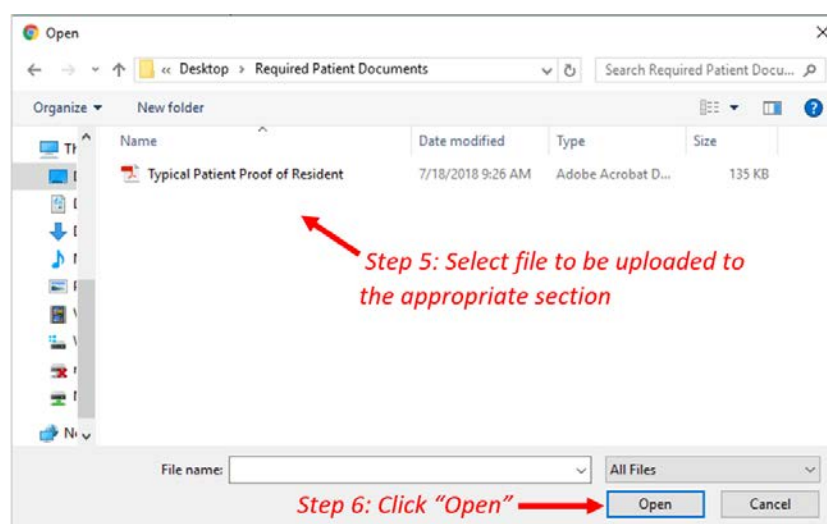


A window will open with the file paths on your desktop/laptop computer.

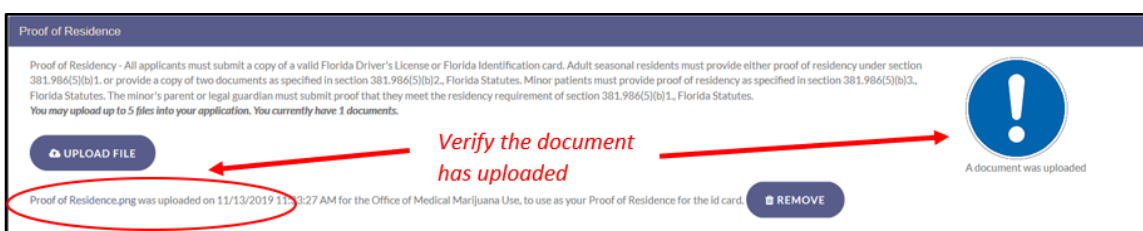
Step 4: Navigate to the location on your desktop/laptop computer that has the file you wish to upload.

Step 5: Select the file to be uploaded.

Step 6: Click “Open.”



You will be redirected to your online application where you can verify that your document was successfully uploaded.



*For information on uploading a photograph into the Medical Marijuana Use Registry, [click here](#).