

Understanding the Registry

Uploading Residence from a Mobile Device

The information below shows how to upload a document from a smartphone or tablet to the Medical Marijuana Use Registry.

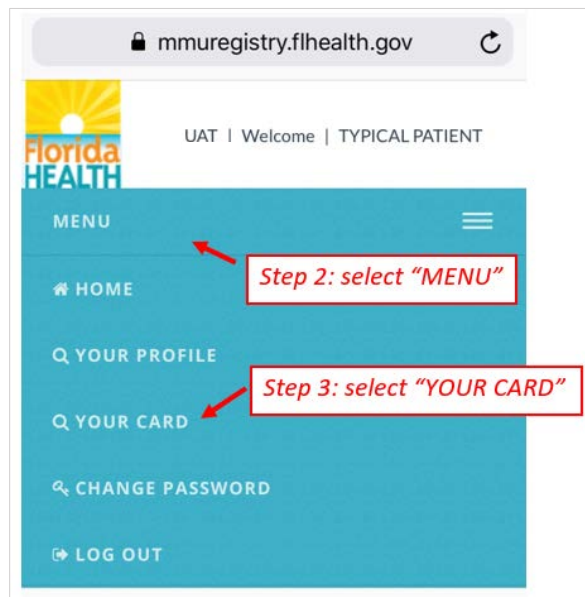
*For information on uploading a proof of residence from a desktop or laptop computer, [click here](#).

*For information on uploading a photograph to the Medical Marijuana Use Registry, [click here](#).

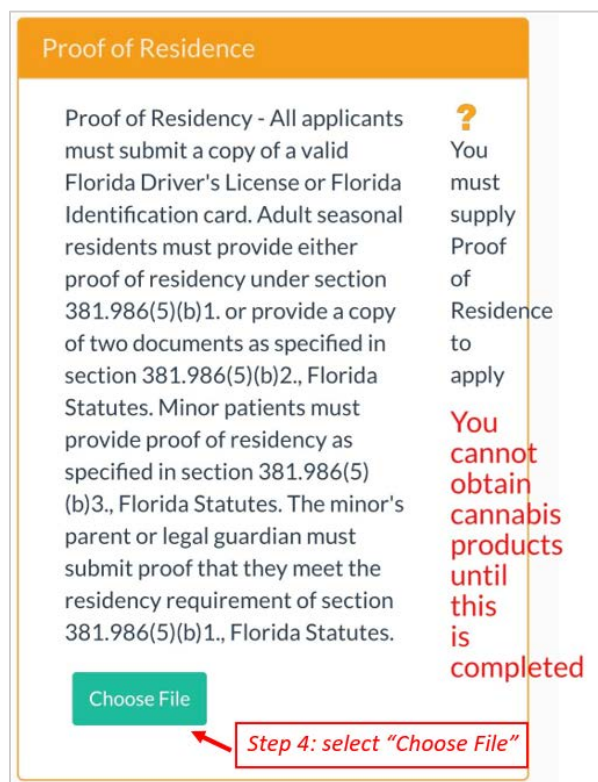
Step 1: Log into the Medical Marijuana Use Registry at <https://mmuregistry.flhealth.gov/>.

Step 2: Click on the MENU bar at the top of the screen.

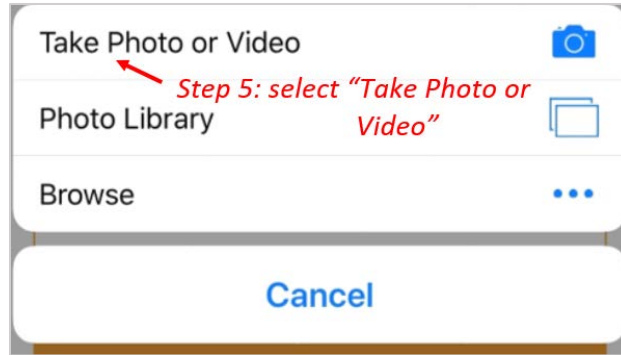
Step 3: Select "YOUR CARD" from the drop-down options to view your identification card application.



Step 4: Scroll down the page until you reach the Proof of Residence section. Click "Choose File."



Step 5: Click "Take Photo or Video."



Step 6: Take a clear photograph of your Florida Driver's License or Florida Identification Card.

Step 7: Click "Use Photo" if the photo taken was clear.



You will be redirected to your online application where you can verify that your document was successfully uploaded.

