

Understanding the Registry

Uploading a Photograph from a Mobile Device

Your photograph is imported directly from your Florida Driver's License or Florida Identification card. If the photograph from your Florida Driver's License or Florida Identification card did not automatically import, please contact your qualified physician and confirm that your Social Security Number and Date of Birth has been entered correctly.

If you do not have a Florida Driver's License or Florida Identification Card, the information below shows how to upload a full-face passport-type photograph from your smartphone or tablet to the Medical Marijuana Use Registry.

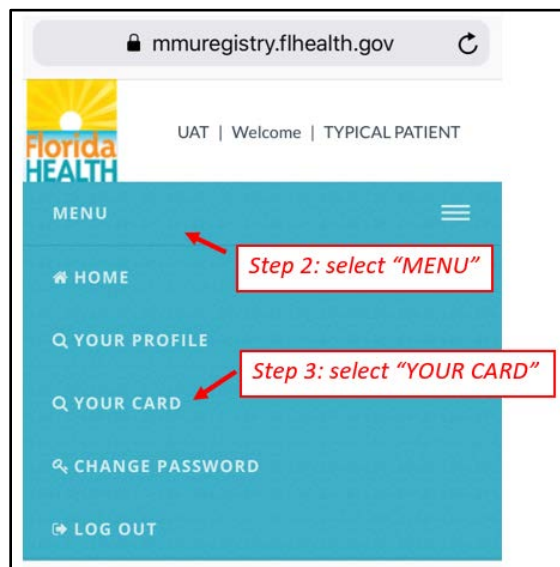
*For information on uploading a photo from a desktop or laptop computer, [click here](#).

*For information on uploading a proof of residence document to the Medical Marijuana Use Registry, [click here](#).

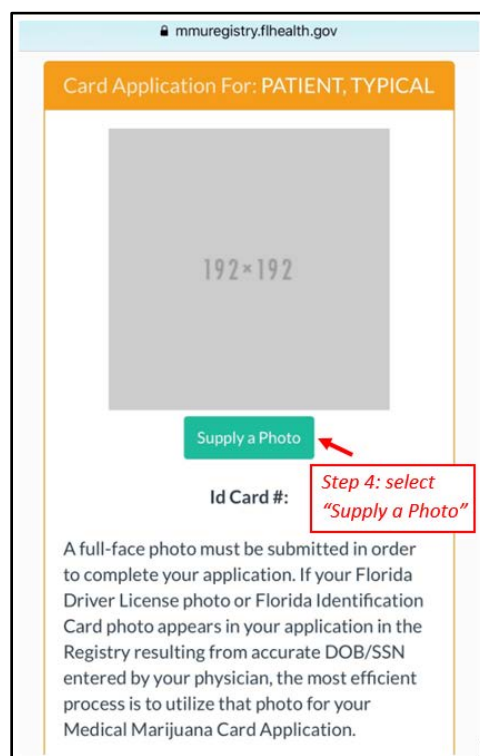
Step 1: Log into the Medical Marijuana Use Registry <https://mmuregistry.flhealth.gov/>.

Step 2: Click on the MENU bar at the top of the screen.

Step 3: Select "YOUR CARD" from the drop-down options to view your identification card application.



Step 4: Click "Supply a Photo" in the patient information section.

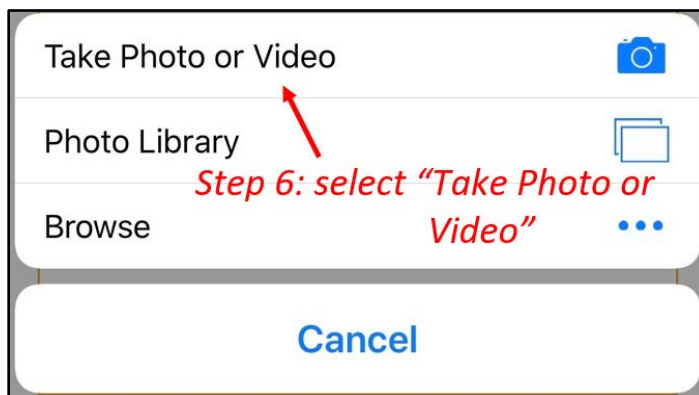


Step 5: Click “Supply my own.”

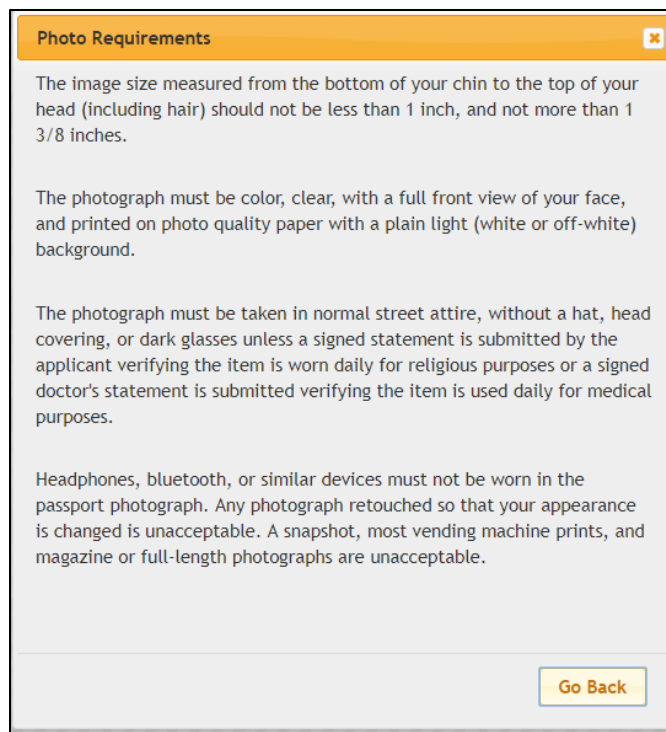


Step 6: Click “Take Photo.”

You can also use an acceptable photo (see mandated criteria below) already in your photo gallery by clicking on “Photo Library” instead.

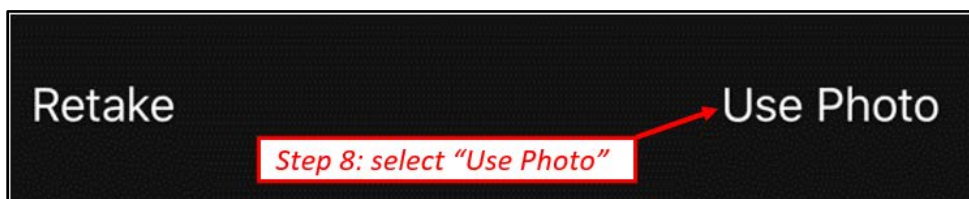


Step 7: Take a photograph of yourself using the mandated criteria for the photograph.



Step 8: If the photograph is clear and meets all requirements, click “Use Photo.”

If you need to retake the photograph, click “Retake” and repeat Step 6 and Step 7.



You will be redirected to your online application where you can verify that your photograph was successfully uploaded.